

Barby and Onley Newsletter

March 2024

www.barbvandonlevparishcouncil.co.uk



EASTER EGG HUNT

2024

WE'RE BACK! COME JOIN US ON THE 31st MARCH FOR THE ONLEY PARK EASTER EGG HUNT! £3 A TICKET, GRAB THEM BEFORE THE 25th MARCH. AVAILABLE FROM NO. 3 AND 5. 1PM START, MEETING ON THE GREEN BY THE BENCHES



Parish Council News (Parish Clerk 07864 579068)

The Parish Council continues to meet on the second Monday of each month except when it falls on a bank holiday. The next meeting will take place on Monday 11th March at 7.30pm at Barby Village Hall. Members of the parish are welcome to join the meeting and raise any issues they wish during the period of public participation at the beginning of the meeting. Agendas and minutes are published on the parish notice boards and on the website <https://www.barbyandonleyparishcouncil.co.uk/> You can contact the Parish Council Clerk, Katrina Jones, at clerk@barbyandonleyparishcouncil.co.uk or by telephone on 07864 579068.

Annual Parish Meeting – Monday 15th April The Annual Parish Meeting will be held at Barby Village Hall on Monday 15th April at 7.30pm. This is an opportunity for organisations in the parish to give a short report on their activities over the past year. All community organisations from Barby and Onley are warmly invited to attend and provide a report. Residents are also very welcome to attend to listen to these reports. Please email the Parish Clerk if you would like to give a report.

Litter Pick The Parish Council has arranged a litter pick on Saturday 23rd March meeting at 10am at Barby Village Hall. Equipment will be provided. There has been a noted increase in litter in the parish and residents are kindly encouraged not to drop litter and to use the bins provided, especially in the play areas.

Rural Community Needs Fund Grants of up to £10,000 are being made available following Northamptonshire Community Foundation's campaign to "Shine a spotlight on rural community needs." The aim of the fund is to address urgent needs to support rural communities to address issues such as fuel poverty, refurbishment of community building and equipment, support for older people and activities and education services for young people. Applications must be submitted by 5th April. Visit the following website for more information: <https://www.ncf.uk.com/rural-community-needs-fund>

Planning The Parish Council is a consultee on planning applications in Barby and Onley and consider new applications at its monthly meetings. West Northamptonshire Council is the deciding authority and full details of all planning applications can be found on their website: <https://www.westnorthants.gov.uk/planning-and-building-control/view-and-comment-planning-application>

Consultations To view current consultations run by West Northants Council please visit the Consultation Hub on the West Northants Council website: <https://westnorthants.citizenspace.com/>

Fix My Street Please continue to report highway issues to West Northamptonshire Council using the following website: <https://www.fixmystreet.com/> If you are reporting an emergency please do not report it online, but ring the Customer Service Centre on 0300 126 1000.

You can report faults linked to amenities or problems that are broken or dirty, damaged or dumped, or need fixing, cleaning or clearing such as: drain covers; kerbs; safety bollards; and potholes. You can also report grit bins in need of filling.

Beat Bus The Northants Police will set up the Beat Bus by the Arnold Arms Car Park on Thursday 18th April between 2.30 to 3.30pm. There is a small possibility that this date could change, though currently this is what has been planned. Hopefully some people may find this service of some use.

Speed Watch in Barby – Saturday 27th April to 25th May

First what is Speedwatch? It is a scheme that provides the police details of vehicles speeding in areas where speeding is of a concern to the community. The focus is on education, Speedwatch does not lead directly to prosecution. However, by continuing with Speedwatch it ensures the village continues to have visits from the police mobile speed camera car/van on a periodic basis.

Speedwatch works through a team of volunteers to record the details of vehicles speeding at agreed strategic locations within the village. With the support of the Parish Council data is submitted to Northamptonshire Police where vehicles are recorded by the Speedwatch team exceeding the 30mph limit. The driver of every vehicle reported as speeding receives a warning letter from the Police explaining the importance of adhering to speed limits. If a driver is reported to be significantly exceeding the speed limit or has been reported more than once the driver will also have a police officer visit.

If anyone would like to join the Barby Speedwatch team and help to make a difference (or find out more information) then please contact the Speedwatch Coordinator. Sessions are flexible, planned around availability usually lasting for 1-2 hours and can be targeted to match busier times in the morning or late afternoon. We currently have dedicated core team and would welcome new volunteers.

Nigel Gove – Speedwatch Coordinator Barby.
Email: nigel.gove@bopc.org.uk Mobile: 07719464433

Clubs and Societies

Badminton Barby Village Hall Wednesdays 8pm-10pm. Exercise yes, fun yes, competitive sometimes. As we only have one court, we generally play doubles. No membership, turn up, pay and play. £3 pp. for the night.

Breakfast Café in Barby Village Hall Old School Room. Have you tried the Full English Breakfast at the Breakfast Café in Barby Village Hall? If not, then join the other villagers there on Sunday 17th March 9.30am to 11.30am which this month will raise funds for Myton Hospice. A full English Breakfast is £7.00 per head inc. tea/coffee/orange. Vegetarian options available.

Evergreen Club – Our meetings in March will be on Wednesday 13th and 27th in the Old School Room of Barby Village Hall. New Evergreen members are always welcome.

St Mary's Church - Soup & Roll at St. Mary's Church, Barby on Saturday 2nd March, 12 noon to 2.00pm. Homemade soup and a roll, homemade desserts and cream, and unlimited tea or coffee will be available for £7. All proceeds go to St. Mary's Church.

Barby Local History Group - Our next meeting will be the AGM on Wednesday 13th March at 7.45 in the Village Hall. If there are any matters you wish to be discussed please let me know on 890760. We hope that there is our usual good turnout, this is your chance to have a say in your History Group.

Barby Cricket Club – 100 Club draw. The winners of the 100 Club in the January 2024 draw were: M. Randall £80, D. Ibbotson £60 and C. Sabine £40.

Barby Village Hall - The Community Café book and jigsaw swap will run as normal during March, meeting on Monday 4th and Monday 18th.

Barby and Onley Gardening Club – we will be holding our March meeting on **Tuesday 19th March** at the Village Hall. Susie Lickman will be talking all things **Houseplants**. Plants will also be for sale. Talks start at 7.40pm with refreshments from 7.15pm. Visitors are always welcome for a £2 donation.

WI – Our last meeting we welcomed Tracey Evans a team member from the Myton Hub. A most informative, interesting chat, there are a lot of kind caring people out there. 16 members enjoyed a drink, nice food and good company at the Wheatsheaf in Crick. Our next meeting on Tuesday March 12th at 7.30 in the Old School room will be our AGM. Members are encouraged to think about joining the committee.

Barby Church Trust (Charity no 277482) - "**Taps & Toilet 100 Club**". The Taps and Toilets draw winner this month was Laura Isom with ball number 61 and a prize of £85.00. Thanks to Ashley for doing the draw.

Other Notices

Fundraising for Barby Village Hall – a date for your diary

April 26th sees the return of Camel Racing to Barby Village Hall to raise funds for the hall's upkeep. Fun for all the family, with refreshments and prizes.

Daventry Dial-a-Ride is looking to expand. Aiming at disabled, elderly people unable to access public transport. A Free shopping bus to Daventry probably on Tuesdays for anyone aged 65 years and above. A door-to-door service with volunteers offering assistance on and off the bus. Call 01327 701665 for further details. You can also hire a mobility scooter from DACT mobility for only £5.

Barby Allotments There is still a small allotment available. Please contact Jo Tilley if interested – drop a note through the door at 22 Kilsby Road or message Jo on Facebook with your contact details.

Pilates at Barby Village Hall

Two classes every Tuesday 9.30 to 10.30 and 10.30 to 11.30.

Pilates is a gentle but effective exercise strengthening the core muscles to support the spine and joints. It also improves flexibility, posture and balance.

Suitable for all ages and abilities. Fully qualified PEA/RSA/Pilates Inst. Instructor.

No joining fee. £6.50 per class. New Members welcome

. For more details phone Mary on 07876 502438

NEVER TOO EARLY....FOR LEARNING FOR FUN

Too early to think about Summer? Surely not!

Planning is in full swing at **The Percival Guildhouse** for summer term courses, dayschools and summer schools, with the term starting on 8th April. Some new courses will be on offer alongside the usual languages, art and wellbeing courses. These include two new art classes on Pencil Portraits and Landscape Sketching, plus Crochet for Beginners and a new beginner's French class. Saturday dayschools will be held in both May and June, with May offering an enticing mix of art and craft, including book making, a Matisse-inspired Summer Painting Workshop, Digital Photography for Beginners and Ukulele for Beginners. Full details of all courses will be available on the Guildhouse website –www.percival-guildhouse.co.uk by mid-March or you can pick up a printed brochure from the Guildhouse in St Matthew's Street, Rugby (just next to the library) or call on: 01788 542467. The Percival Guildhouse is the only independent non-vocational centre for adult education and the arts in Warwickshire.

Buckby Library & Hub There's a lot going on in March. All welcome!
Saturday, March 2nd: Bargain books at our **special book sale**, 10am-2pm.

Thursday, March 7th: it's **World Book Day!** You can find resources for families here: <https://www.worldbookday.com/families/>

Saturday, March 9th: **International Women's Day** on Saturday, March 9th, 2-4.30pm (doors open 1.45pm), with presentations, informal sessions and chats with local practitioners. There will be a few table sales plus a raffle and refreshments, raising money for the library & hub. The full programme is on the website - <https://buckbylibraryhub.org/fascinating-event-coming-up-in-the-hub/> - and also available in the library. No tickets needed but donations welcome.

Thursday, March 21st 7.30-9pm: Long Buckby Ukulele Group will provide musical entertainment at our café style event. Doors open from 7pm. Refreshments available. Space is limited so please reserve your seats at the library or through the contacts below. Donations welcome.

Tuesday, March 26th, film night, 7.30pm: we will be showing **Jules**: 'Milton (Ben Kingsley) lives a quiet life of routine in a small western Pennsylvania town, but finds his day upended when a UFO crash lands in his backyard. Before long, Milton develops a close relationship with "Jules".... Doors open at 7pm. Tickets £7 from the library or the Peephole in the High Street. Refreshments available.

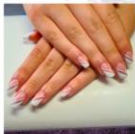
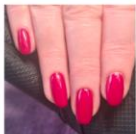
Saturday, March 30th: Buckby Library & Hub and the Community Centre are holding a **Spring Fayre** at the Community Centre. See our website for further information.

March art exhibition: come and see paintings by local artist, Anna Langton, during our opening hours. The exhibition will continue throughout the month.

You can find our calendar here: <https://buckbylibraryhub.org/calendar/>

<https://buckbylibraryhub.org>; info@buckbylibraryhub.org; 01327 842591; NN6 7QT

The Nail Master



Premium Nail Services

Relaxing home salon 1-2-1 luxury treatments
Natural manicures/pedicures
Gel polish/BIAB/extensions/nail art

Star Corner, Barby Tel: 07590277151

Book online <https://the-nail-master.square.site>
Open 5 days a week (Tues-Sat)



The Nail Master



Ellen_thenailmaster

Your Current Parish Councillors

Chairman Paul Reynolds	Lilac Cottage, Daventry Rd, Barby	07815 551202 paul.reynolds@bopc.org.uk
Vice Chairperson Steven Gee	41 Daventry Road, Barby	07969 992557 steven.gee@bopc.org.uk
Adrian Cooper	70 Onley Park, Willoughby	01788 819060 or 0752 760 6823 adrian.cooper@bopc.org.uk
Dawn Cotton	69 Onley Park, Willoughby	01788 815906 dawn.cotton@bopc.org.uk
Faith Gorman	25 Almond Close, Barby	0771 0349 733 faith.gorman@bopc.org.uk
Gareth James	11 Kilsby Road, Barby	gareth.james@bopc.org.uk
Nigel Gove	37 Holme Way, Barby	01788 891118 nigel.gove@bopc.org.uk
Bryan O'Reilly	The Glen, Onley Lane, Barby	01788 899065 brian.oreilly@bopc.org.uk
Jane Pollard	Hopthorne Cottage, 16 Kilsby Road, Barby	07896 262690 jane.pollard@bopc.org.uk
Phil Wagg	26 Daventry Road, Barby	01788 317508 phil.wagg@bopc.org.uk
Sarah Withington	3 Onley Park, Onley,	0752 589 3429 sarah.withington@bopc.org.uk
Parish Clerk Katrina Jones	77 High Street, Naseby, Northants NN6 6DD	0786 457 9068 clerk@barbyandonleyparishcouncil.co.uk
Police	Tel 101 for non-emergencies, 999 for emergencies craig.egdell@northants.pnn.police.uk (0755 777 8055)	
Highway Problems	www.northamptonshire.gov.uk/streetdoctor or call 0300 126 1000	

Copy for the next issue (April) should be sent to
barbyandonleynewsletter@gmail.com by **Sunday 24th March 2024**.

Dates for your Diary

March	2 nd	Soup & A Roll – St. Mary's Church 12.00noon to 2.00pm
	4 th	Community Café – Barby Village Hall 2.00am to 4.00pm
	11 th	Parish Council Meeting – Barby Village Hall 7.30pm
	12 th	WI AGM – Barby Village Hall 7.30pm
	13 th	Evergreen Club - Barby Village Hall – 2.00pm to 4.00pm
	13 th	Local History Group AGM – Barby Village Hall 7.45pm
	17 th	Breakfast Café – Barby Village Hall – 9.30am to 11.30am
	18 th	Community Café – Barby Village Hall 2.00pm to 4.00pm
	19 th	Gardening Club – Barby Village Hall – 7.15pm
	23 rd	Litter Pick. Meet at Barby Village Hall 10.00am
	27 th	Evergreen Club – Barby Village Hall 2.00pm to 4.00pm
	31 st	Easter Egg Hunt - Onley Park 1pm
April	15 th	Annual Parish Meeting - Barby Village Hall 7.30pm

DOORS & DRAWERS

**THE KITCHEN & BEDROOM REFURBISHMENT SPECIALISTS
WORKTOPS & APPLIANCES SPECIALISTS**

Visit the Website at www.doorsanddrawers.co.uk

Or call Ian on 01788 891289

15 years in business providing Unisex Hair and Beauty treatments in our relaxed, friendly salon where a warm welcome awaits you!



Now offering Microblading (natural looking semi-permanent eyebrows) ideal for filling in sparse, thin brows – please ask for a free consultation!

Try our best-selling Luxury Hour, a back massage and facial treatment using our massage expertise and aromatherapy oils to ease tired muscles and indulge your senses

Hair - Massage – Nails – Facials – Waxing - Ear piercing - Pedicures - Microblading

www.bbeautifulrugby.co.uk call 01788 890889 19 Lower Street, Willoughby, Rugby, CV23 8BX



jasonlittle
carpet & flooring ltd

07974 473917

jasonlittle@outlook.com

www.jasonlittleflooring.co.uk

**CARPETS, WOODEN FLOORING,
LVT, VINYL & LAMINATE.**

Providing the personal touch from start to finish.

We bring the shop to your home or business, providing samples of all aspects of flooring and keeping you safe.



FREE QUOTATIONS