

# Barby and Onley Newsletter

## December 2023 and January 2024

[www.barbyandonleyparishcouncil.co.uk](http://www.barbyandonleyparishcouncil.co.uk)



### Barby Christmas Trees Festival December 2<sup>nd</sup> to 24<sup>th</sup>

All are welcome to visit 2023 Christmas Trees Festival in St Mary's Church, Barby. The church will be open daily. There will be refreshments and a raffle on Sunday 10<sup>th</sup> and Sunday 17<sup>th</sup> December between 1.30pm – 3.30pm. Free entry but donations would be most welcome.



CAROLS  
AROUND THE  
CHRISTMAS  
TREE



6.30pm Monday 18<sup>th</sup> December

To be held on the green opposite the village shop.  
Mulled wine, mince pies & soft drinks will be provided  
Any donations made will go to Hope4 Rugby



Hosted by Barby  
Townlands & Educational  
Charity

*Merry Christmas and  
A Happy New Year!*

























**Christmas Tree  
Lighting and celebration**

Come join us for the annual  
Onley Park light switch on  
Join us by the memorial  
bench on the green for  
mince pies, cakes, hot  
chocolate and mulled wine  
Saturday 2<sup>nd</sup> December 6pm!

A very special  
guest will be  
waiting inside his  
Grotto!! A small  
gift will be given  
out to those who  
visit  
Friends & Family  
are welcome!

**Barby Village Advent Calendar 2023 Window Trail – Barby will be lighting up a new window every night from December 1<sup>st</sup> to December 24<sup>th</sup>. Each window will be lit from 6.00pm to 9.00pm. Do take the time to walk around the village in December and look at the different windows.**

## Barby Advent Calendar 2023

 <b>1</b>	 <b>2</b>	 <b>3</b>	 <b>4</b>
2 Kilsby Rd	11 Castle Mound	29 Almond Close	22 Kilsby Rd
 <b>5</b>	 <b>6</b>	 <b>7</b>	 <b>8</b>
26 Brackendale Dr	10 Rectory Close	5 Castle Mound Rectory, Rectory Ln	
 <b>9</b>	 <b>10</b>	 <b>11</b>	 <b>12</b>
47 Brackendale Dr	3 Brackendale Dr	3 Holme way	45 Brackendale Dr
 <b>13</b>	 <b>14</b>	 <b>15</b>	 <b>16</b>
5 Brackendale Dr	5 Rectory Lane	Hopthorne Fm 18 Kilsby Rd	16 Rugby Rd
 <b>17</b>	 <b>18</b>	 <b>19</b>	 <b>20</b>
41 Brackendale Dr	35 Holme Way	19 Brackendale Dr	18 Almond Close
 <b>21</b>	 <b>22</b>	 <b>23</b>	 <b>24</b>
10 Brackendale Dr	22 Rugby Rd	19 Rectory Lane	The Church

Windows should be lit between 6pm and 9pm from their date until the 24th of December

Many thanks to all who have volunteered their windows.

## **Parish Council News (Parish Clerk 07864 579068)**

**Barby & Onley Parish Council Meetings** -The Parish Council continues to meet on the second Monday of each month except when it falls on a bank holiday. The next meeting will take place on Monday 11<sup>th</sup> December 7.30pm at Barby Village Hall. Members of the parish are welcome to join the meeting and raise any issues they wish during the period of public participation at the beginning of the meeting. Agendas and minutes are published on the parish notice boards and on the website <https://www.barbyandonleyparishcouncil.co.uk/>

You can contact the Parish Council Clerk, Katrina Jones, at [clerk@barbyandonleyparishcouncil.co.uk](mailto:clerk@barbyandonleyparishcouncil.co.uk) or by telephone on 07864 579068.

**Planning** -The Parish Council is a consultee on planning applications in Barby and Onley and consider new applications at its monthly meetings. West Northamptonshire Council is the deciding authority and full details of all planning applications can be found on their website: <https://www.westnorthants.gov.uk/planning-and-building-control/view-and-comment-planning-application>

**Consultations** - To view current consultations run by West Northants Council please visit the Consultation Hub on the West Northants Council website: <https://westnorthants.citizenspace.com/>

**Fix My Street** - You can report highway issues to West Northamptonshire Council using the following website: <https://www.fixmystreet.com/> The website is designed to help Northamptonshire residents to report, view, or discuss local highway faults, including potholes, directly and quickly to the council by simply locating them on a map. You can do this by using your computer or your mobile phone. **If you are reporting an emergency please do not report it online, but ring the Customer Service Centre on 0300 126 1000.** You can report faults linked to amenities or problems that are broken or dirty, damaged or dumped, or need fixing, cleaning or clearing such as: drain covers; kerbs; safety bollards; and potholes. You can also report grit bins in need of filling.

**Christmas Recycling** - To find out information about West Northants Council services during the Christmas period including bin collection days, Christmas tree collection details, additional recycling arrangements and library opening times please visit the West Northants website:

<https://www.westnorthants.gov.uk/your-council/christmas-west-northamptonshire>

***The Parish Council would like to take this opportunity to wish you a very Merry Christmas and a Happy New Year!***

## Clubs and Societies

**Barby Gardening Club** - The December meeting for the Gardening Club is on **Thursday 14<sup>th</sup> December at 7.30pm** (please note change of evening) when we will hold our AGM followed by Xmas Social. Visitors are very welcome (£2 donation). Our first meeting of 2024 is on **January 16<sup>th</sup>** when Michael Brown will talk about weeds. "A Bouquet of Weeds" will cover how weeds were useful in the past and how we can learn to love them. As usual we meet from 7.15pm for refreshments with talks starting at 7.40pm. Visitors are very welcome to join us (£2 donation).

**Barby Local History Group** - Our Christmas Social will be held on Wednesday 13<sup>th</sup> December at 7.45pm in the Village Hall. Please bring a plate of food to share, and £2 towards the drinks. Do come and enjoy our annual get together. The first meeting of the New Year will be on January 10th, same time and venue as above. Ann and Daphne will share their research on the Chapmans, coopers in Barby from the late 1600s, and the Elliotts who succeeded them. Sadly their house is no more, but we have some original documents relating to it. Visitors very welcome. A Merry Christmas to all, and a Happy New Year.

**The Breakfast Café** in Barby Village Hall Old School Room. A full English breakfast costs £7 (7 items).

The Barby Breakfast Café ladies thank you so much for your kind donations for The Young Carers, Daventry at November's Breakfast Café. Cat at Young Carers came and collected the gifts, which will be given to the Young Carers before Christmas..What amazing support from the villages, it was a busy one, with 69 covers, and a £278 profit after all expenses for food taken out. £100 was given to The Young Carers, from the Breakfast Club with the £178, going back into the pot to re-share at the end of the Breakfast Club season in June to all of the charities that have been supported.



Donations for Daventry Young Carers

A big thank you to Barby Knitters who donated £80 directly to The Young Carers and a big thank you to Holly Bowditch who raised over £100 with a raffle, which was also donated directly today to The Young Carers.

The next Breakfast Café is Sunday 17th December when we will be raising funds for "The Daventry Food Bank"; there will also be a food donation box. The January Breakfast Café on Sunday 21<sup>st</sup> is in aid of "Friends of St. Cross". Many thanks for your support.

**Barby Village Hall** - The Community Café book and jigsaw swap will take place on 4<sup>th</sup> and 18<sup>th</sup> December, raising funds for Barby Village Hall. The January Café will be on 8<sup>th</sup>.

**Evergreen Club** – Barby Evergreens will have a Christmas special on 20<sup>th</sup> December at the Village Hall. The January meetings will be 3<sup>rd</sup>, 17<sup>th</sup> and 31<sup>st</sup>.

**Barby Cricket Club** – 100 Club draw. The winners in the October draw were M. Randle £80.00, M. Barnes £60.00 and C. Sabine £40.00.

**Barby Church Trust** (Charity no 277482) - “**Taps & Toilet 100 Club**”. The Taps and Toilets draw winner this month was Helen Durnin with ball number 45 and a prize of £80.00.

**Soup & Roll at St. Mary's Church**, Barby on Saturday 2<sup>nd</sup> December 12 noon to 2pm. Homemade soup and a roll, homemade desserts and cream, tea or coffee will be available for £7. All proceeds go to St. Mary's Church. And the first Soup and A Roll of the New Year will be on Saturday 6<sup>th</sup> January.

**WI** – At our meeting we were shown how to beautifully wrap gifts by upcycling many every day things that we would normally throw out. We have had an “in house craft work shop” and made some very lovely snowmen. Our New Years meal is planned for late in January, we will be going to the Arnold Arms. Our next meeting on Tuesday 12<sup>th</sup> December is our party; members are reminded to be in the hall for 6 o'clock as we are having our group photo taken. The January meeting is Tuesday 9<sup>th</sup> at 7 30, Colin Hills will give a talk “Would you Adam and Eve it”!!

Friday February 9<sup>th</sup> sees Bingo back in Barby, tickets will be £5 to include a light supper. More detail will be on Facebook in the new year.

WI members would like to wish Barby and Onley residents a very Happy 2024.

## Barby Post Office & Stores

We would like to thank all our customers for their support over the last year. We look forward to serving you again in 2024.

We are open from 7.00am to 7.00pm Monday to Saturday, 8.00am to 3.00pm on Sundays. Post Office is open 9am to 2.30pm Monday to Friday and 9am to 12.30pm on Saturday. During the Festive period, we are open on Christmas Eve (Sunday) 8.00am to 6.00pm, closed on Christmas Day (Monday), on Boxing Day (Tuesday) open 8.00am to 3.00pm, New Year's Eve (Sunday) open 8.00am to 6.00pm, New Year's Day (Monday) closed.

***Wishing you all a Merry Christmas and a Happy New Year.  
From all the Staff at Barby Village Stores***

Copy for the next issue (February) should be sent to [barbyandonleynewsletter@gmail.com](mailto:barbyandonleynewsletter@gmail.com) by Sunday 21<sup>st</sup> January 2024

## Other Notices

**Barby Village Quiz** The Village Hall and Church Trust would like to thank all those that supported the Quiz Night on Sunday 12<sup>th</sup> November. Around £600 was raised by the event. Thanks to Gill Leppard for organising the event and to all who helped.

### **Barby Meadow Woods update**

It's been a very busy year packed full of progress on our exciting community project, just before we turn to 2024. By the time you read this, each child at Barby C of E Primary School will have planted a tree, tagged with their name – they can watch these flourish and grow in the coming years.

The week commencing the 4<sup>th</sup> December our contractor will commence planting 5500 trees in the main field in accordance with our planting plan and comprise of the bulk of the planting.

Our community-led planting will take place on Sunday 25<sup>th</sup> February 2024, with Sunday 3<sup>rd</sup> March set aside as contingency day should we not finish on the 25<sup>th</sup>. We will release further details about the community planting day in December via Facebook, we are just finalising details but hope to see many people from Barby and Onley come to support us. Weather permitting, we aim to put on a BBQ and refreshments to help power the volunteers!

**Poppy Appeal** - Many, many thanks for all who supported this years Poppy Appeal. Collectively, Barby donated £1036 to the Royal British Legion. Thank you to all who gave, to our wonderful house to house collectors, to Barby School, our Village Shop, The Shooting Ground and The Arnold Arms. In the cash-less world we seem to live in, Barby has willingly found cash for this amazing and worth while cause - thank you.

### **Pilates at Barby Village Hall**

Two classes every Tuesday 9.30am and 10.30am.

Pilates is a gentle but effective exercise strengthening the core muscles to support the spine and joints. It also improves flexibility, posture and balance.

Suitable for all ages and abilities. Fully qualified PEA/RSA/Pilates Inst. instructor.

No joining fee. £6.50 per class. For more details phone Mary on 07876 502438





orange

*"Up-to-date and accurate advice to help you achieve your business's full potential."*

**Our Services:**

- ✔ Accounts & Bookkeeping
- ✔ Tax Returns
- ✔ VAT Returns
- ✔ Payroll

**Contact Us:**

- 📧 orangeaccountancyservices.co.uk    ☎ 07914 017405
- ✉ admin@orangeaccountancyservices.co.uk



# Ecotherm

Facilities Management Ltd

---

**About Us**  
**PLUMBING, ELECTRICAL AND HEATING SOLUTIONS**

Our team of Gas Safe and OFTEC engineers, Electricians & Plumbers are here whenever you need us! Boiler services, breakdowns, care & maintenance plans as well as underfloor heating installations & repairs. Electrical safety testing and repairs. Full central heating installations with renewable options available. Bathroom remodelling and full electrical re-fits, we can help with 0% finance options available on most services too!

- 🔧 Boiler service, maintenance & repair
- 🔧 Commercial plumbing & heating systems
- 🔧 Hot water systems & Plumbing repairs
- 🔧 Electrics, solar, lighting, EV charge points

- 🌱 Renewable energy
- 🏠 Smart homes
- 🔧 Energy saving upgrades
- 👤 All staff have enhanced DBS checks

---

**07814 420 873**  
**01327 225 321**  
[www.ecotherm-fm.com](http://www.ecotherm-fm.com)






**Village Hall sign repaired** - A team of volunteers has renovated and re-erected the Barby Village Hall sign, which was beginning to show signs of ageing. The sign was first made after a bequest from Miss Audrey Pittom in 1990 but the money was not received until after the sale of her house in 1991. Delays in getting the sign made and relevant permissions to put it up meant it was finally unveiled at "Gala Day" 4<sup>th</sup> September 1993 by members of the Pittom family. It seems rather fitting that the date of the renovation is almost exactly 30 years after it was erected. Many thanks to all the volunteers, and especially to Richard Chillingsworth who did the renovation.



## Local church services for December 2023.

Sunday 3<sup>rd</sup> December. St. Mary's Church, Barby. 10am Combined service with St. Faith's, Kilsby. A service of Holy Communion celebrated by The Venerable Richard Ormston, Archdeacon of Northampton. The Archdeacon's sermons are always inspiring. All are welcome.

Friday 8<sup>th</sup> December. St. Mary's, Barby. 9.15am Christingle service with Barby C or E School in St. Mary's. Everyone is welcome. Come and hear some excellent and enthusiastic singing from the children.

Sunday 10<sup>th</sup> December. 10am \* Morning Worship Service at St. Mary's, Barby.

Sunday 10<sup>th</sup> December. 10am Service of Holy Communion at St. Faith's, Kilsby. Celebrated by Revd. Liz Cowley.

Sunday 17<sup>th</sup> December. 10am Service of Holy Communion at St. Mary's, Barby. Celebrated by Revd. Kit Jarman.

Sunday 17<sup>th</sup> December. St. Mary's, Barby. 4.00 pm "Carols by Candlelight." Traditional candlelight service at St. Mary's. Come and celebrate in your church which has stood here for over 1,000 years. The entire community is welcome to this enchanting afternoon carol service. Mulled wine and mince pies after the service.

Sunday 17<sup>th</sup> December. St. Faith's, Kilsby. 6.00 pm "Carols by Candlelight" A service of carols and readings.

Monday 8<sup>th</sup> December. St. Mary's, Barby. 09:15 am Barby C of E School Christmas Service. All are welcome.

Sunday 24<sup>th</sup> December. 10am St. Mary's, Barby.\* Morning Worship Service.

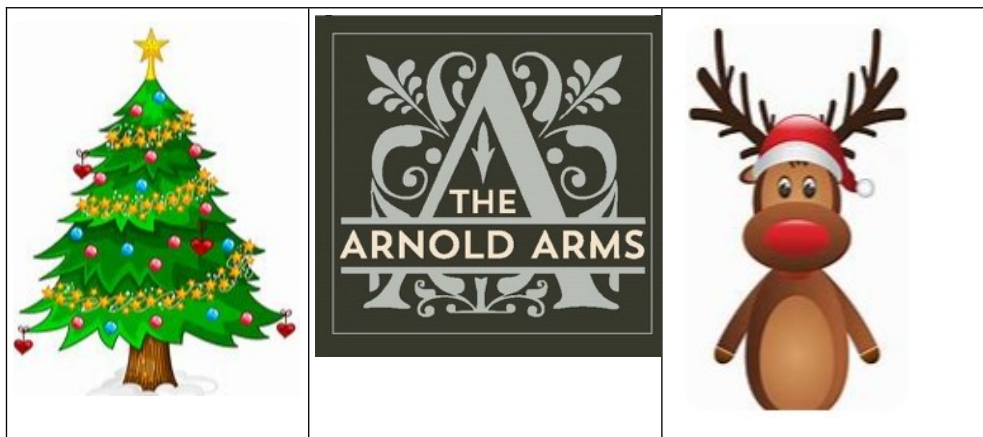
Sunday 24<sup>th</sup> December. St. Faith's, Kilsby. 11:30 pm A traditional midnight mass celebrated by Revd. Liz Cowley. All are welcome to this wonderful service on the eve of our Lord's birth.

Monday 25<sup>th</sup> December. 10am St. Mary's, Barby. Service of Holy Communion. Celebrated by Revd. Kit Jarman

Sunday 31<sup>st</sup> December. 10am St. Faith's, Kilsby. Combined service with St. Mary's. Service of Holy Communion celebrated by Revd. Kit Jarman.

\* Morning Worship Service does not include Holy Communion. Everyone is welcome regardless of your faith.





## ***Upcoming Entertainment***

- Sunday 3<sup>rd</sup> December***      ***Quiz – starts 8pm***
- Saturday 9<sup>th</sup> December***      ***Arnold Arms 1<sup>st</sup> Birthday Party with DJ Pete***
- Sunday 10<sup>th</sup> December***      ***Live Music Simon Buckingham 5-7pm***
- Thursday 14<sup>th</sup> December***      ***Great British Game Food & Wine Night***
- Sunday 17<sup>th</sup> December***      ***Quiz – starts 8pm***
- Saturday 23<sup>rd</sup> December***      ***Christmas Party with Live Music by Peter James***
- Thursday 28<sup>th</sup> December***      ***Big Fat Music Quiz with Quiz Master Pete 8pm***
- Friday 29<sup>th</sup> December***      ***Live Party Music with Keynon starts 8pm***
- Saturday 30<sup>th</sup> December***      ***Live Music with Duo Del & Pauly starts 8pm***
- Sunday 31<sup>st</sup> December***      ***New Year's Eve Party with DJ Pete starts 8pm***

***Great Pub • Great Food***

**Telephone – 01788 891 470**

**Email – [thearnoldarmsbarby@outlook.com](mailto:thearnoldarmsbarby@outlook.com)**

## Your Current Parish Councillors

<b>Chairman</b> <b>Paul Reynolds</b>	Lilac Cottage, Daventry Rd, Barby	07815 551202 <a href="mailto:paul.reynolds@bopc.org.uk">paul.reynolds@bopc.org.uk</a>
<b>Vice Chairperson</b> <b>Steven Gee</b>	41 Daventry Road, Barby	07969 992557 <a href="mailto:steven.gee@bopc.org.uk">steven.gee@bopc.org.uk</a>
<b>Adrian Cooper</b>	70 Onley Park, Willoughby	01788 819060 or 0752 760 6823 <a href="mailto:adrian.cooper@bopc.org.uk">adrian.cooper@bopc.org.uk</a>
<b>Dawn Cotton</b>	69 Onley Park, Willoughby	01788 815906 <a href="mailto:dawn.cotton@bopc.org.uk">dawn.cotton@bopc.org.uk</a>
<b>Faith Gorman</b>	25 Almond Close, Barby	0771 0349 733 <a href="mailto:faith.gorman@bopc.org.uk">faith.gorman@bopc.org.uk</a>
<b>Gareth James</b>	11 Kilsby Road, Barby	<a href="mailto:gareth.james@bopc.org.uk">gareth.james@bopc.org.uk</a>
<b>Nigel Gove</b>	37 Holme Way, Barby	01788 891118 <a href="mailto:nigel.gove@bopc.org.uk">nigel.gove@bopc.org.uk</a>
<b>Bryan O'Reilly</b>	The Glen, Onley Lane, Barby	01788 899065 <a href="mailto:brian.oreilly@bopc.org.uk">brian.oreilly@bopc.org.uk</a>
<b>Jane Pollard</b>	Hopthorne Cottage, 16 Kilsby Road, Barby	07896 262690 <a href="mailto:jane.pollard@bopc.org.uk">jane.pollard@bopc.org.uk</a>
<b>Phil Wagg</b>	26 Daventry Road, Barby	01788 317508 <a href="mailto:phil.wagg@bopc.org.uk">phil.wagg@bopc.org.uk</a>
<b>Sarah Withington</b>	3 Onley Park, Onley,	0752 589 3429 <a href="mailto:sarah.withington@bopc.org.uk">sarah.withington@bopc.org.uk</a>
<b>Parish Clerk</b> Katrina Jones	77 High Street, Naseby, Northants NN6 6DD	0786 457 9068 <a href="mailto:clerk@barbyandonleyparishcouncil.co.uk">clerk@barbyandonleyparishcouncil.co.uk</a>
<b>Police</b>	Tel 101 for non-emergencies, 999 for emergencies <a href="mailto:craig.egdell@northants.pnn.police.uk">craig.egdell@northants.pnn.police.uk</a> (0755 777 8055)	
<b>Highway Problems</b>	<a href="http://www.northamptonshire.gov.uk/streetdoctor">www.northamptonshire.gov.uk/streetdoctor</a> or call 0300 126 1000	

# The Nail Master

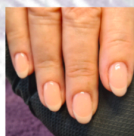
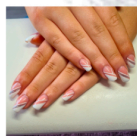
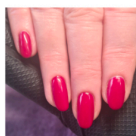
## Premium Nail Services

Relaxing home salon 1-2-1 luxury treatments  
Natural manicures/pedicures  
Gel polish/BIAB/extensions/nail art

Star Corner, Barby Tel: 07590277151

Book online <https://the-nail-master.square.site>

Open 5 days a week (Tues-Sat)



The Nail Master



Ellen\_thenailmaster

## Dates for your Diary

<b>December</b>	2 <sup>nd</sup>	Soup and a Roll – St. Mary’s Church 12 noon to 2.00pm
	2 <sup>nd</sup>	Onley Park Christmas Lights switch-on 6.00pm
	4 <sup>th</sup>	Community Café – Barby Village Hall – 2.00pm to 4.00pm
	8 <sup>th</sup>	Christingle Service at St. Mary’s Church 9.15am
	11 <sup>th</sup>	Parish Council Meeting – Barby Village Hall 7.30pm
	12 <sup>th</sup>	WI – Barby Village Hall – 6.00pm for photographs
	13 <sup>th</sup>	Local History Group – Barby Village Hall 7.30pm
	14 <sup>th</sup>	Gardening Club – Barby Village Hall 7.15 for 7.45 start
	17 <sup>th</sup>	Breakfast Café – Barby Village Hall 9.30am
	17 <sup>th</sup>	Carols by Candlelight at St. Mary’s Church 4.00pm
	18 <sup>th</sup>	Barby C of E School Christmas Service, St. Mary’s 9.15am
	18 <sup>th</sup>	Community Café – Barby Village Hall 2.00pm to 4.00pm
	18 <sup>th</sup>	Carols around the Christmas Tree 6.30pm
	20 <sup>th</sup>	Evergreen Club Christmas special – Barby Village Hall – 2.00pm to 4.00pm
	25 <sup>th</sup>	Holy Communion at St. Mary’s Church 10am
<b>January</b>	3 <sup>rd</sup>	Evergreen Club – Barby Village Hall 2.00pm to 4.00pm
	6 <sup>th</sup>	Soup and a Roll – St. Mary’s Church 12 noon to 2.00pm
	8 <sup>th</sup>	Community Café – Barby Village Hall 2.00pm to 4.00pm
	8 <sup>th</sup>	Parish Council Meeting – Barby Village Hall 7.30pm
	9 <sup>th</sup>	WI – Barby Village Hall 7.30pm
	16 <sup>th</sup>	Gardening Club – Barby Village Hall 7.15pm for 7.40 start
	17 <sup>th</sup>	Evergreen Club – Barby Village Hall 2.00pm to 4.00pm
	21 <sup>st</sup>	Breakfast Café – Barby Village Hall 9.30am
	31 <sup>st</sup>	Evergreen Club – Barby Village Hall 2.00pm to 4.00pm
	<b>February</b>	9 <sup>th</sup>

### News from Long Buckby Library & Hub

Arts and crafts sale: we will be having a pre-Christmas ‘Under £20’ sale of arts and crafts during December. The sale will include handmade bookmarks and gift tags, Christmas cards, tree decorations and small paintings. Come along during opening hours and find gifts for family and friends.

**West Northants Council monthly drop-in sessions:** the next session is on Friday, December 15<sup>th</sup>, 10.30-12.30. Feel free to come along with your questions or concerns.

Do check the website for our regular activities. You can find our calendar here:

<https://buckbylibraryhub.org/calendar/>.

# DOORS & DRAWERS

**THE KITCHEN & BEDROOM REFURBISHMENT SPECIALISTS  
WORKTOPS & APPLIANCES SPECIALISTS**

Visit the Website at [www.doorsanddrawers.co.uk](http://www.doorsanddrawers.co.uk)

Or call Ian on 01788 891289

**15 years in business providing Unisex Hair and Beauty treatments in our relaxed, friendly salon where a warm welcome awaits you!**



Now offering Microblading (natural looking semi-permanent eyebrows) ideal for filling in sparse, thin brows – please ask for a free consultation!

Try our best-selling Luxury Hour, a back massage and facial treatment using our massage expertise and aromatherapy oils to ease tired muscles and indulge your senses

Hair - Massage – Nails – Facials – Waxing - Ear piercing - Pedicures - Microblading

[www.bbeautifulrugby.co.uk](http://www.bbeautifulrugby.co.uk) call 01788 890889 19 Lower Street, Willoughby, Rugby, CV23 8BX



**jasonlittle**  
carpet & flooring ltd

07974 473917  
[jasonlittle@outlook.com](mailto:jasonlittle@outlook.com)  
[www.jasonlittleflooring.co.uk](http://www.jasonlittleflooring.co.uk)

**CARPETS, WOODEN FLOORING,  
LVT, VINYL & LAMINATE.**

Providing the personal touch from start to finish.

We bring the shop to your home or business, providing samples of all aspects of flooring and keeping you safe.

